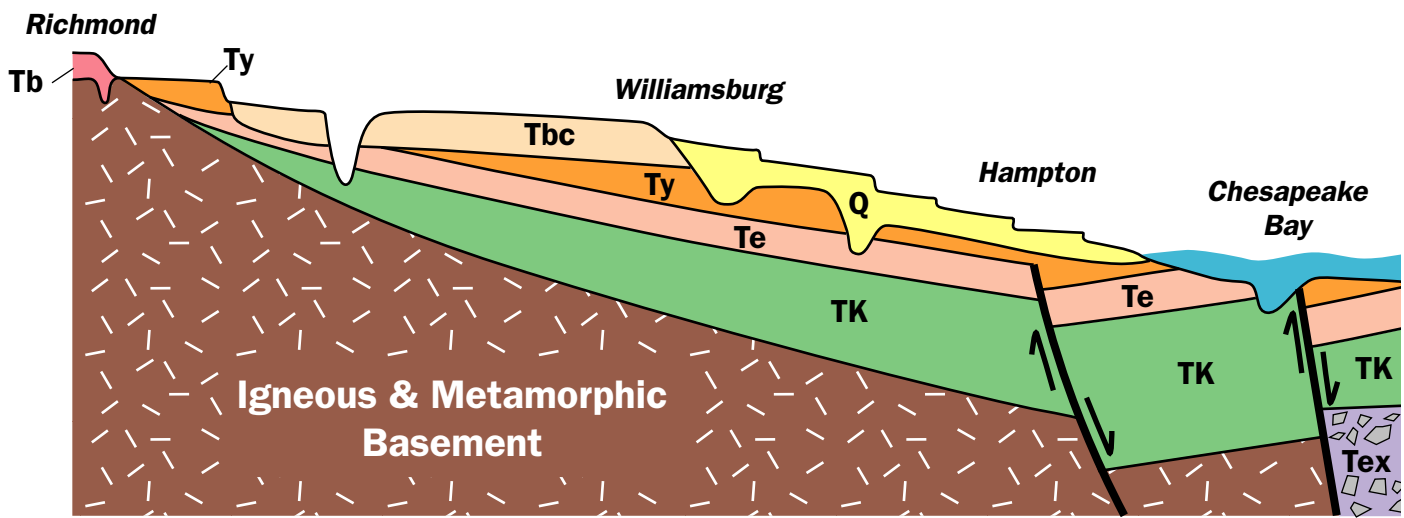


# Terrace Stratigraphy of the Virginia Coastal Plain

1999, G. H. Johnson & C. M. Bailey, College of William & Mary



Vertically Exaggerated

## Legend

- Q-** Quaternary formations, fluvial and estuarine, sand, silt and clay
- Tbc-** Bacons Castle Formation, fluvial-deltaic and tidal, gravel, sand, and clay
- Ty-** Yorktown Formation, marine, fossiliferous sand
- Te-** Eastover Formation, marine, sand and clay
- Tb-** Bon Air Gravel, fluvial, gravelly sand, silt, and clay
- Tex-** Exmore Breccia
- TK-** Older Tertiary and Cretaceous formations, marine and deltaic, sand and clay