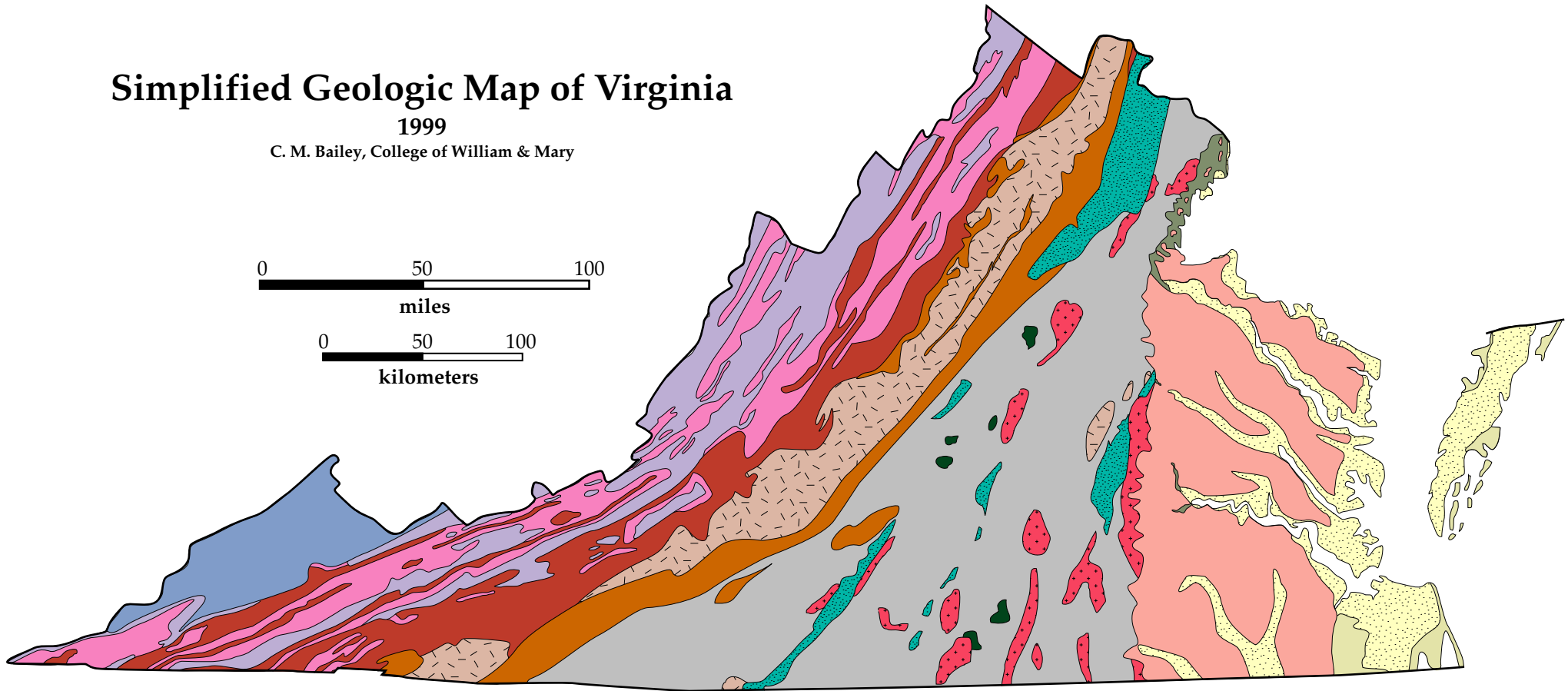
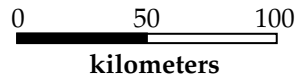
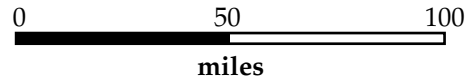


# Simplified Geologic Map of Virginia

1999

C. M. Bailey, College of William & Mary



## Proterozoic



**Neoproterozoic**  
(550-750 Ma)  
Metasedimentary rocks,  
metarhyolite, & metabasalt



**Proterozoic-Paleozoic**  
(550-750 Ma)  
Gneiss, schist, slate, phyllite,  
quartzite, & marble



**Cambrian**  
(500-550 Ma)  
Dolomite, limestone,  
shale, & sandstone



**Mississippian-Devonian**  
(320-410 Ma)  
Sandstone, shale with  
minor gypsum & coal



**Cretaceous**  
(65-140 Ma)  
Partly lithified sand,  
clay, and sandstone



**Quaternary**  
(20 ka- 2 Ma)  
Sand, mud, & gravel



**Holocene**  
(present- 20 ka)  
Sand, mud, & peat  
deposited in beaches,  
marshes, swamps, &  
estuaries



**Mesoproterozoic**  
(980-1400 Ma)  
Granite, granitic gneiss,  
charnockite, & layered  
gneiss



**Paleozoic**  
(300-500 Ma)  
Granite & other  
felsic igneous  
rocks



**Paleozoic**  
(300-500 Ma)  
Gabbro & other  
mafic igneous  
rocks



**Silurian-Ordovician**  
(410-500 Ma)  
Limestone, dolomite,  
shale, & qtz sandstone



**Pennsylvanian**  
(290-320 Ma)  
Sandstone, shale &  
coal



**Triassic-Jurassic**  
(200-225 Ma)  
Red & gray shale,  
sandstone, & conglomerate  
Intruded by diabase &  
basalt



**Tertiary**  
(2-65 Ma)  
Sand, mud, limy sand, &  
marl.