

## **Library Report for Sociology Assessment**

Prepared by Gul Ozyegin, Sociology Library Representative (1998-2002)

This report highlights the growth and development of the Sociology library sources/collections in Swem Library since 1997 when the Sociology Department began a process of reconstruction. The arrival of seven new faculty members in the last five years with diverse and multi-faceted research programs and innovative pedagogical styles added much depth to our curriculum offerings and substantially expanded our Department's international and interdisciplinary focus. These developments changed the department's library needs considerably, especially in the areas of serial subscriptions, and sources on international issues.

### Periodical Subscriptions

The number of our faculty who have strong teaching and research commitments to international, cross-cultural, and transnational issues has increased with recent additions of new faculty. We sought to build the library's periodical subscriptions for these faculty and their courses. For example, in the last two years, we requested subscriptions to Identities: Global Studies in Culture & Power; International Sociology; Mobilization; Sexualities; and Critique of Anthropology, to support new course offerings and faculty research. Also, there were some gaping voids in periodical subscriptions in disciplinary substantive areas and sub-fields. Some leading journals of our discipline, such as Work and Occupations and Sociological Theory, were missing. We added not only these missing titles to our subscription list but also journals in some of the substantive fields of Sociology that have become more diversified. In the area of aging, for example, we now have subscriptions to Ageing and Society; Journal of Women and Ageing, Research on Aging, and The Gerontologist. In addition to these print sources, Swem Library offers a rich selection of electronic databases in the social sciences for faculty and student research.

### Books

The College of William and Mary's Swem Library subscribes to a book purchasing approval plan with Yankee Book Peddler, one of the leaders in approval plans. Annually, Yankee makes available to libraries 50,000 new titles from 1,500 publishers. For Sociology, Swem Library purchases virtually all books published by 225 university presses as well as titles from a number of trade publishers who specialize in sociology, such as Russell Sage, Routledge, Blackwell, Allyn and Bacon, and McGraw-Hill. As the following figures show, starting with fiscal year 1998, we have experienced steady increases in our allocation (except in fiscal year 1999, during which the allocation for this year dropped for every department/program since Swem had a flat budget year). But more importantly, we have consistently spent

our allocation well and on time (full expenditure of funds by the end of the fiscal year), thus, maintaining a high allocation library budget.

Fiscal year:	Allocation:	Expended:
2002	\$23,884.00	T.B.A.
2001	\$21,983.00	\$22,623.26
2000	\$21,402.00	\$22,802.87
1999	\$20,017.00	\$20,498.52
1998	\$21,502.00	\$20,778.63
1997	\$20,368.00	\$17,275.24

### The Role of the Library Liaison

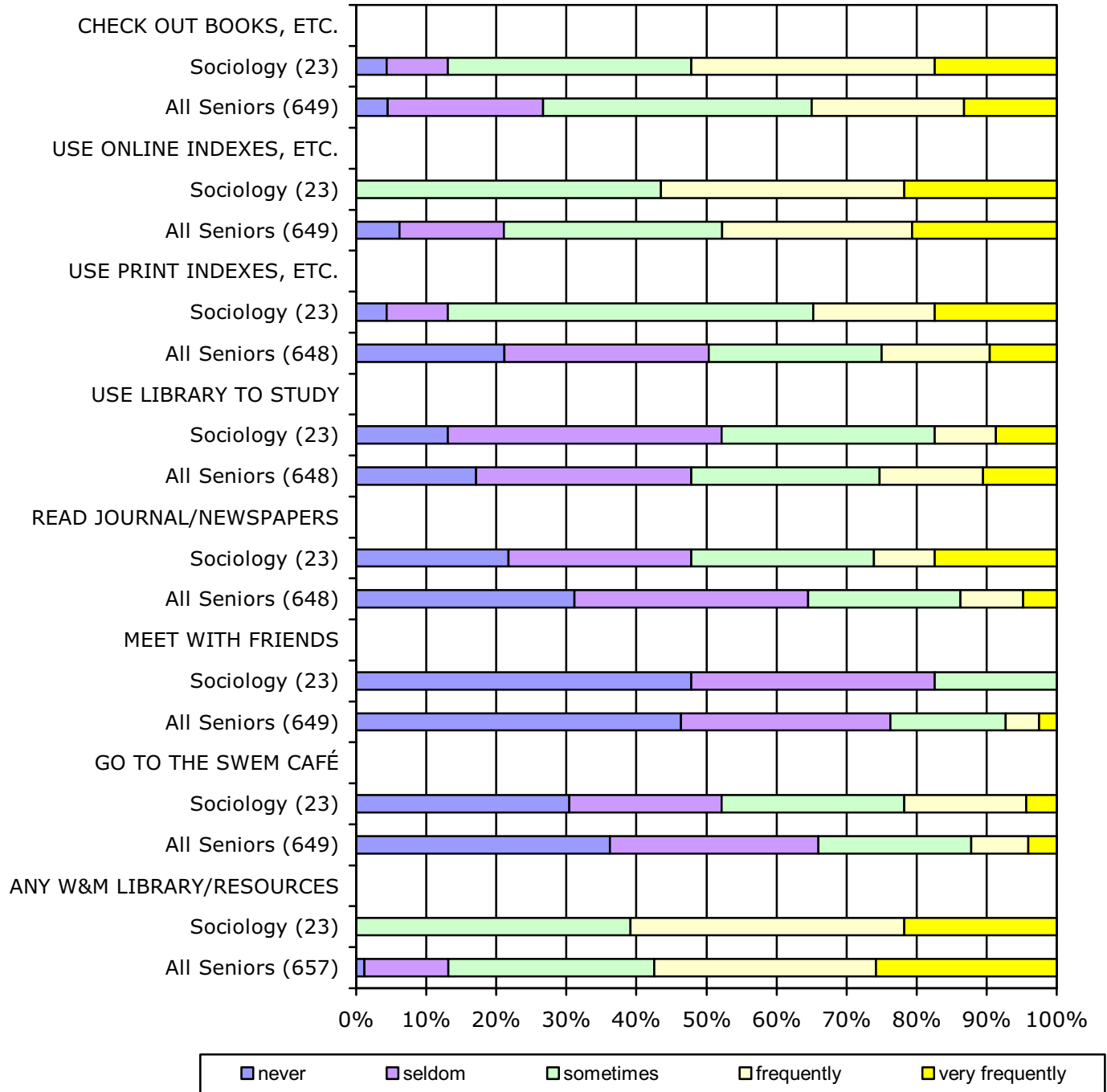
Swem's library liaisons, serving as advocates for departmental library issues and working closely with the Department's faculty representative, provide vital support for our department's efforts to strengthen and expand our library resources. The Sociology library liaison lends her expertise in collection assessments, monitors approval plans and book budgets, and recommends materials for purchase. Training both students and faculty in the use of print and electronic resources is also another important service the library liaison provides. To illustrate, our current library liaison's activities in the past semester have included orientation classes for several freshman classes in Sociology, a presentation of a library instruction session for Sociology senior thesis students, and meetings with some individual faculty members to discuss electronic reserves and journal issues. In addition, the liaison has provided individual-based reference consulting for students and faculty.

### Relevant Survey Results: 2001 Senior Survey & 2001 Alumni Survey

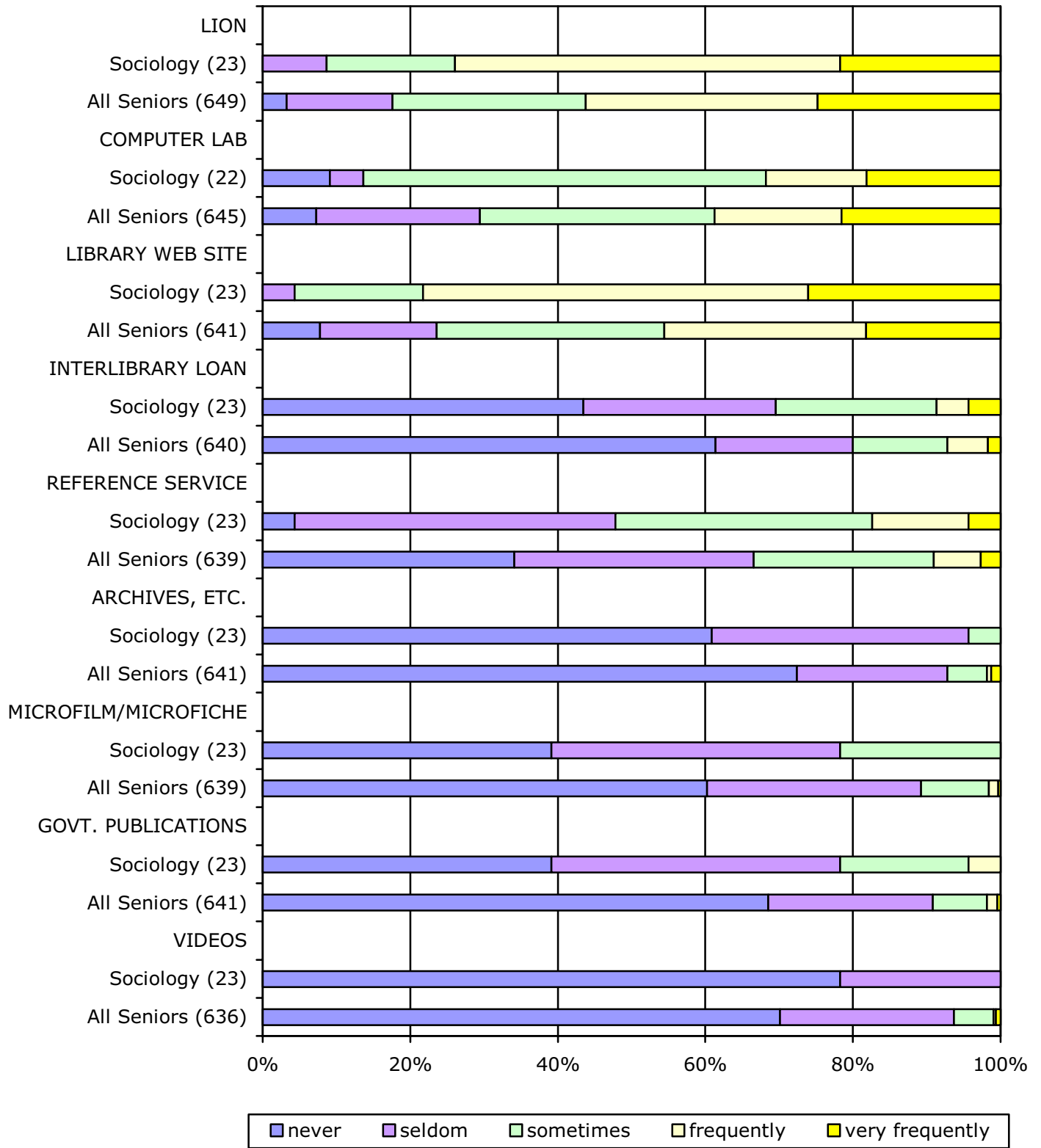
Each spring, William and Mary seniors are asked about their experiences at the College and their plans for the future. In the 2001 Senior Survey, several items relate specifically to the College's libraries. Students were asked to report the frequency with which they use W&M libraries or their online resources, and the specific resources available through the libraries. In addition, the Sociology Alumni Survey conducted in Fall 2001 asks graduates to rate the library facilities/holdings. The following graphs display responses of sociology concentrators and all seniors.

## SPRING 2001 Senior Survey: Responses Relevant to the Libraries

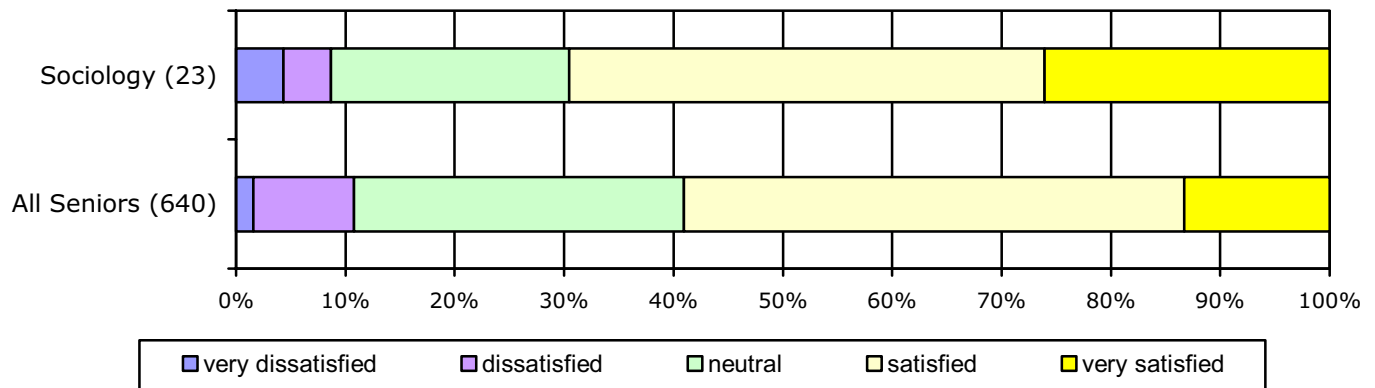
Item: How frequently do you use a College library (or web pages) to do the following:



**Item: How frequently do you use the following library resources or services?:**



**Item: How satisfied are you with the College of William and Mary libraries?**

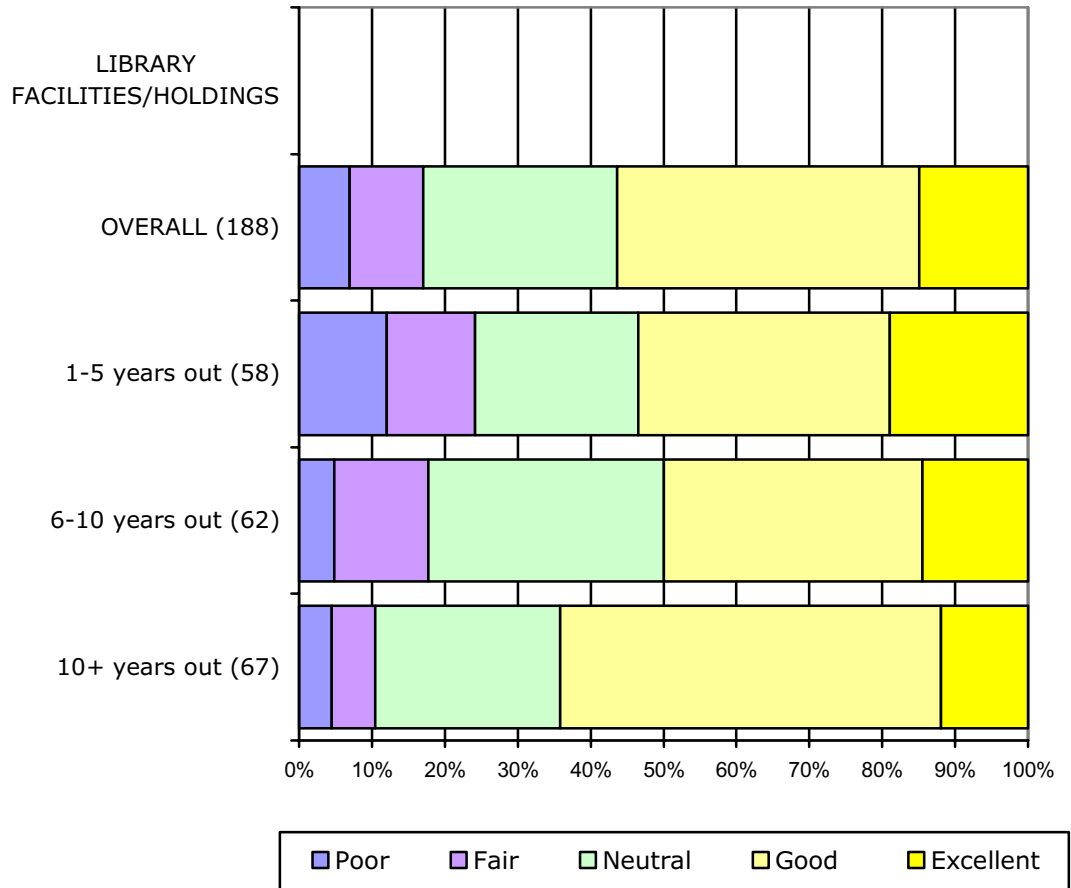


**SOCIOLOGY CONCENTRATORS:  
COMMENTS ABOUT THE WILLIAM & MARY LIBRARIES**

- I feel that books and other materials could be better organized so that they are easier to find
- Great services when needed
- Library staff is so helpful; the research librarians are all outstanding & helpful!!
- For one of my classes I was required to present a literary review on aging in the rural communities and I found that we did not have many of the journals on aging. In soc there is an aging class and it might be nice to include some more journals that do relate to specific aspects of aging-rural living, healthcare- it was frustrating to print citations and check LION
- The library needs more of everything. The collection of research resources is pitiful. I have had to use interlibrary loan too often to get the information that I need.

## 2001 Alumnae/Alumni Survey: Responses Relevant to the Libraries

When asked to rate library facilities/holdings, graduates with a concentration in sociology responded as follows:



## Technology

### Spring 2001 Senior Survey: Responses Relevant to Technology

In 2001, Seniors were asked to indicate ways in which they use computers and which computer applications William & Mary helped them learn how to use. Seniors reported the following:

**Item: Please indicate the ways in which you use computers and which computer applications William & Mary helped you learn how to use (mark all that apply)**

Computer Application	Use		W&M helped you learn	
	Sociology respondents (N=23)	All respondents (N=712)	Sociology respondents (N=23)	All respondents (N=712)
<b>Word processing</b>	21 (91%)	622 (87%)	6 (26%)	142 (20%)
<b>Email</b>	21 (91%)	621 (87%)	7 (30%)	165 (23%)
<b>Research</b>	21 (91%)	606 (85%)	13 (57%)	363 (51%)
<b>World Wide Web</b>	19 (83%)	584 (82%)	7 (30%)	163 (23%)
<b>Chat or instant messaging</b>	15 (65%)	460 (65%)	2 (9%)	76 (11%)
<b>Downloading music</b>	14 (61%)	434 (61%)	2 (9%)	124 (17%)
<b>Spreadsheets</b> (e.g., Excel, Quattro Pro, Lotus 123)	15 (65%)	420 (59%)	11 (48%)	314 (44%)
<b>Presentation graphics</b> (e.g., PowerPoint or Corel Presentations)	21 (91%)	418 (59%)	18 (78%)	292 (41%)
<b>Gaming</b> (entertainment)	14 (61%)	362 (51%)	--	33 (5%)
<b>Accessing or maintaining databases</b>	16 (70%)	348 (49%)	10 (43%)	261 (37%)
<b>Statistical analyses</b>	16 (70%)	282 (40%)	11 (78%)	286 (40%)
<b>Photographic or multimedia editing</b>	5 (22%)	261 (37%)	1 (4%)	94 (13%)
<b>Desktop publishing</b>	8 (35%)	231 (32%)	2 (9%)	83 (12%)
<b>Maintaining you calendar or schedule</b>	6 (26%)	143 (20%)	--	24 (3%)
<b>Computer programming</b>	2 (9%)	137 (19%)	3 (13%)	152 (21%)

## 2001 Alumnae/Alumni Survey: Responses Relevant to Technology

Graduates were asked the same questions that were asked of seniors. In addition, graduates were asked to rate how well the sociology department contributed to their personal development of computing skills related to the discipline, and their preparation for using appropriate equipment and technologies in graduate and professional studies and the workforce. Overall results for each item, and a breakdown by year (1-5 years out, 10 years out and 15-20 years out) are presented in the table and graph below.

Use				W&M helped you learn				Computer Application
COHORTS				COHORTS				
All yrs (199)	1-5	6-10	10+	All yrs (199)	1-5	6-10	10+	
94%	95%	97%	90%	53%	59%	71%	33%	word processing
59%	59%	71%	50%	21%	54%	9%	3%	Presentation graphics (e.g., PowerPoint or Corel Presents)
42%	46%	45%	38%	8%	18%	6%	1%	Desktop publishing
95%	95%	99%	90%	34%	57%	40%	10%	Email
67%	66%	66%	68%	17%	38%	12%	4%	Accessing or maintaining databases
31%	33%	35%	25%	4%	8%	3%	--	Photographic or multimedia editing
36%	54%	37%	19%	5%	13%	3%	--	Downloading music
38%	39%	39%	36%	6%	12%	6%	--	Gaming (entertainment)
50%	64%	54%	35%	7%	13%	6%	1%	Chat or instant messaging
54%	51%	65%	49%	7%	13%	8%	--	Maintaining your calendar or schedule
83%	82%	91%	79%	43%	71%	49%	14%	Research
93%	93%	97%	89%	26%	54%	26%	1%	Browsing the World Wide Web
67%	69%	68%	67%	20%	38%	20%	4%	Spreadsheets (e.g., Excel, Quattro Pro, Lotus 123)
38%	39%	39%	36%	42%	66%	45%	19%	Statistical analyses
14%	10%	15%	17%	9%	10%	9%	8%	Computer programming

Other computer uses cited by respondents:

1 to 5 years out: Maintaining my personal finances

6 to 10 years out: Web site design  
legal databases

>10 years out: legal research, on-line banking/purchasing  
legal research, meeting people  
client scheduling program I use for my current job  
banking: Quicken Deluxe

