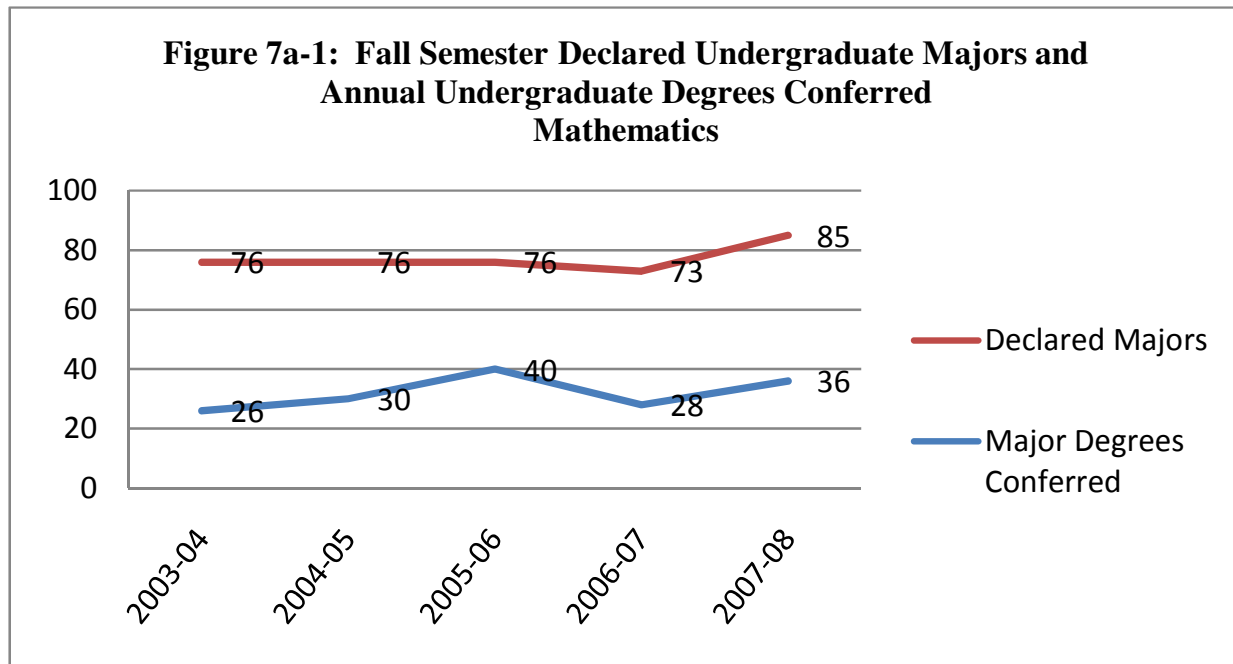


7. Graduation, Enrollment, and Faculty Headcount Trends

Table 7a-1: Declared Undergraduate Majors and Degrees Conferred – Five-year Trends

Majors	Fall 2003			Fall 2004			Fall 2005			Fall 2006			Fall 2007			Avg
	1st	2nd	Total	1st	2nd	Total	1st	2nd	Total	1st	2nd	Total	1st	2nd	Total	
Mathematics	9	4	13													2.6
Applied Mathematics	18	3	21	15	3	18	18	5	23	22	2	24	24	3	27	22.6
Pre-College Math Teaching	8		8	7		7	2		2	4		4	6		6	5.4
Standard Mathematics	27	7	34	35	16	51	31	20	51	31	14	45	41	11	52	46.4
All Majors	62	14	76	57	19	76	51	25	76	57	16	73	71	14	85	77.2
Degrees	2003-04			2004-05			2005-06			2006-07			2007-08			Avg
	1st	2nd	Total	1st	2nd	Total	1st	2nd	Total	1st	2nd	Total	1st	2nd	Total	
Mathematics	5	2	7													1.4
Applied Mathematics	7	2	9	9	2	11	5	2	7	12	2	14	10	1	11	10.4
Pre-College Math Teaching	1		1	4		4	3		3							1.6
Standard Mathematics	8	1	9	8	7	15	19	11	30	10	4	14	19	6	25	18.6
All Degrees	21	5	26	21	9	30	27	13	40	22	6	28	29	7	36	32

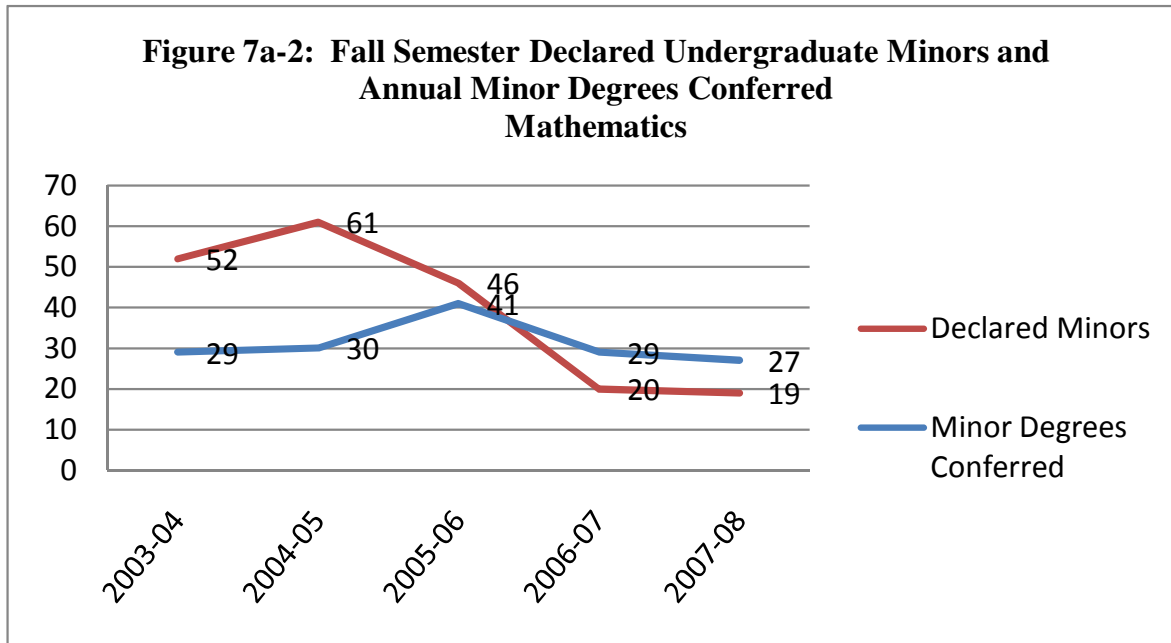
Legend: 1st = First Majors 2nd = Second Majors



Major output from PgmRev2009_UGMajorsMinors.sas produced by the Office of the Dean of Arts and Sciences on 10/7/08. Degree output from PgmRev_DegreesConferred.sas produced by the Office of the Dean of Arts and Sciences on 7/2/08.

Table 7a-2: Declared Undergraduate Minors and Degrees Conferred: Five-year Trends

Minor	Fall 2003	Fall 2004	Fall 2005	Fall 2006	Fall 2007	Avg
Mathematics	52	61	46	20	19	39.6
Degrees	2003-04	2004-05	2005-06	2006-07	2007-08	Avg
Mathematics	29	30	41	29	27	31.2



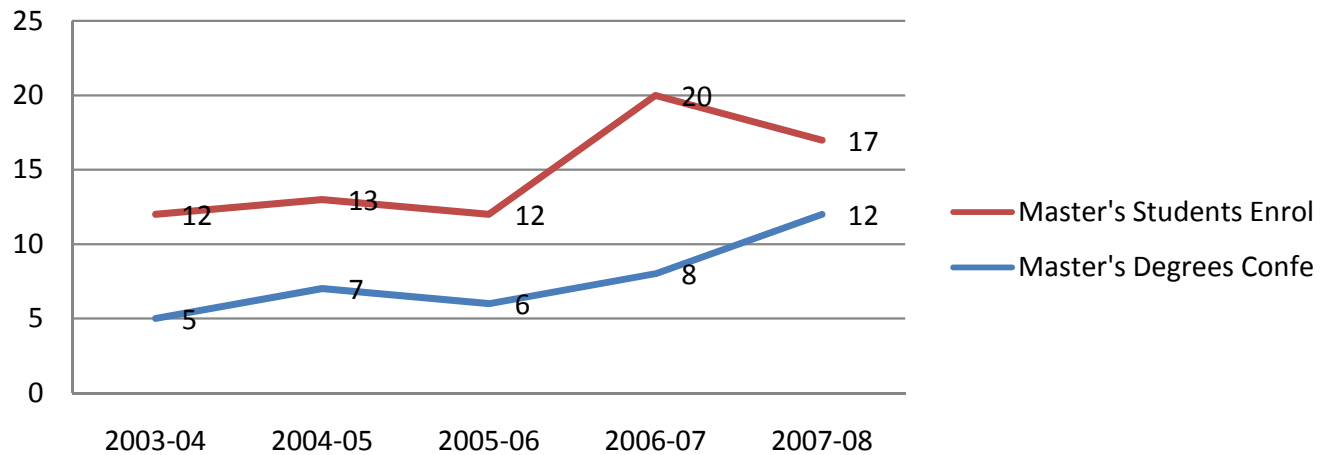
Minor output from PgmRev2009_UGMajorsMinors.sas produced by the Office of the Dean of Arts and Sciences on 10/7/08. Degree output from PgmRev_DegreesConferred.sas produced by the Office of the Dean of Arts and Sciences on 7/2/08.

Table 7a-3: Graduate Students Enrolled and Graduate Degrees Conferred – Five-year Trends

Enrolled Students	Fall 2003			Fall 2004			Fall 2005			Fall 2006			Fall 2007			Avg
	MS	PhD	Total	MS	PhD	Total	MS	PhD	Total	MS	PhD	Total	MS	PhD	Total	
Computational Operations Research	12		12	13		13	12		12	20		20	17		17	15
Degrees	2003-04			2004-05			2005-06			2006-07			2007-08			Avg
	MS	PhD	Total	MS	PhD	Total	MS	PhD	Total	MS	PhD	Total	MS	PhD	Total	
Computational Operations Research	5		5	7		7	6		6	8		8	12		12	7.6

Legend: PhD = Doctoral Degree
MS = Master of Science

**Figure 7a-3: Fall Semester Graduate Students and Annual Degrees Conferred
Computational Operations Research**



Enrolled graduate output from PgmRev_2009_GAMajors.sas produced by the Office of the Dean of Arts and Sciences on 9/22/08. Degree output from PgmRev_DegreesConferred.sas produced by the Office of the Dean of Arts and Sciences on 7/2/08.